

ORION Mikrodalga Hareket Sensörü

Microwave Motion Sensor

Radar Sensör

Radar Sensor

048



Ürün Kodu
Code

CSMORS 20

Ampul
Lamp

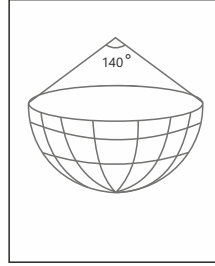
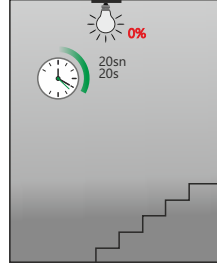
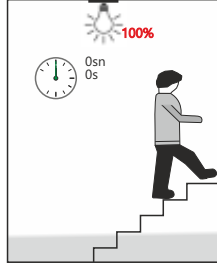
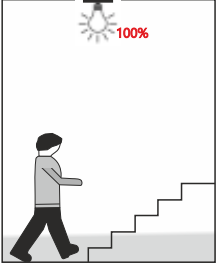
$\leq 100W$ LED

Gecikme
Delay

20sn 20s

Ağırlık
Weight

90 gr



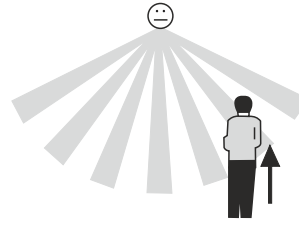
Algılama şekli
Detection method



Sensöre Yatay Yürüyüşte
Horizontal Walking to Sensor



Sensöre Dikey Yürüyüşte
Vertical Walking to Sensor



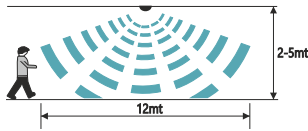
Sensöre Paralel Yürüyüşte
Parallel Walk To Sensor

Tespit alanı
Detection area

Tavana Monte
Ceiling Mounted

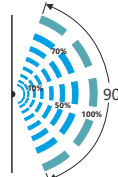


Algılama aralığı 360°
Detection range 360°

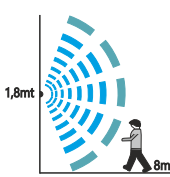


Montaj Yüksekliği
Mounting height

Duvara Monte
Wall Mounted



Algılama aralığı
Detection range

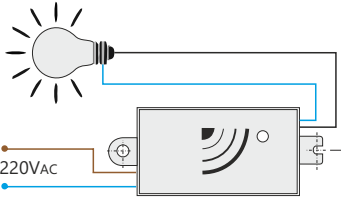
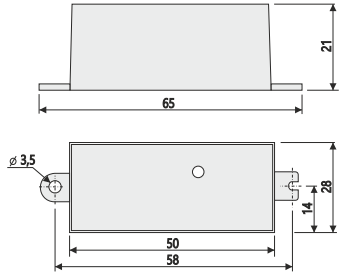


Montaj Yüksekliği
Mounting height

Mini Orion Radar Sensör Small Orion Radar Sensor

- Enjeksiyon kalıplı UL-94V-0 alevsınıfı, yangın geciktiricili ince termoplastik ABS gövde
Injection molded UL-94V-0 flame class, thin thermoplastic with fire retardant PC body
- Doppler etkisine göre kararlı çalışma
Stable operation according to the Doppler effect
- Dijital kontrol ile hassas algılama,
Sensitive detection with digital control,
- Alüminyum ve sac kutular içinde sorunsuz çalışma
Smooth operation in aluminum and sheet metal boxes
- İnce tasarımı sayesinde, aydınlatma içerisinde ve fiziki dar alanlarda kullanılabilir.
Thanks to its slim design, in lighting and can be used in physical confined spaces.
- Algılama sinyali kapılardan, cam panellerden ve ince duvarlardan (15cm) hareketi tespit edebilir.
Detection signal from doors, glass panels and It can detect movement from thin walls (15cm).
- Armatür içerisinde, Odalar, otoparklar, lavabolar, merdiven boşlukları ve kat hollerinde sıva üstü veya alçıpan içine gizlenebilir şekilde montajı sağlanıp, rahatlıkla kullanılabilir.
Inside the armature, Rooms, car parks, sinks, surface of stairways and floor halls or concealed installation in plasterboard can be provided and can be used easily.
- TS EN 55015:2014
TS EN 61547:2010
TS EN 61000-3-2:2006
TS 8698 EN 60598-2-1:196
CE normlarına uygun
According to TS EN 55015:2014
TS EN 61547:2010
TS EN 61000-3-2:2006
TS 8698 EN 60598-2-1:196

Boyutlar / Dimensions



Bilgiler Information

Çalışma Voltajı Operating Voltage	85-265V AC
Çalışma Frekansı Frequency	50/60Hz
Çıkış Gücü Operating Voltage	$\leq 100W$
Algılama Açısı Operating Voltage	360°
Algılama Mesafesi Operating Voltage	6m
Işık Algılama Operating Voltage	2-2000 Lux
Zaman Geçikmesi Operating Voltage	>20sn
Montaj Yüksekliği Frequency	2.8m
Güç Sarfıyatı Power Consumption	<1W
Çalışma Sıcaklığı Operating temperature	-5C° 55C°
Gövde Sıcaklığı Body Temperature	40C°